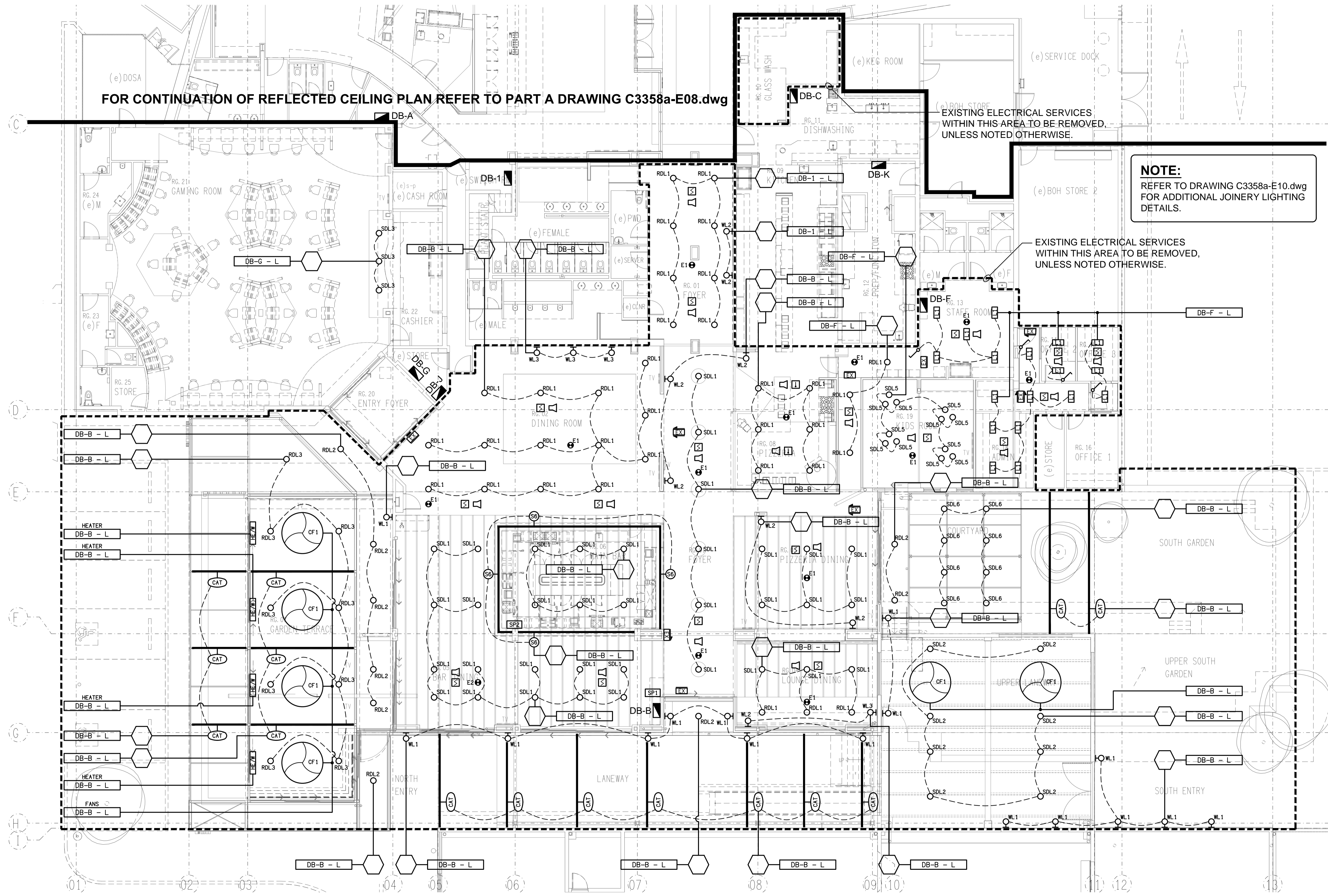


FOR CONTINUATION OF REFLECTED CEILING PLAN REFER TO PART A DRAWING C3358a-E08.dwg

EXISTING ELECTRICAL SERVICES WITHIN THIS AREA TO BE REMOVED, UNLESS NOTED OTHERWISE.

NOTE:
REFER TO DRAWING C3358a-E10.dwg FOR ADDITIONAL JOINERY LIGHTING DETAILS.

EXISTING ELECTRICAL SERVICES WITHIN THIS AREA TO BE REMOVED, UNLESS NOTED OTHERWISE.



ELECTRICAL DESIGN GROUP BRISBANE
PTY LTD
ACN 092 710 793
TRADING AS:
ELECTRICAL DESIGN GROUP

THE COPYRIGHT OF THIS DRAWING
REMAINS THE PROPERTY OF THE
ELECTRICAL DESIGN GROUP.
USE FIGURED DIMENSIONS
IN REFERENCE TO SCALE.
ALL DIMENSIONS TO BE
VERIFIED ONSITE.

ELECTRICAL DESIGN GROUP
ELECTRICAL BUILDING SERVICES CONSULTANTS
BRISBANE GOLD COAST

P.O. Box 15, Sherwood Q.4075
Phone: (07) 3278 4375
Email: brisbane@edg.net.au
Web: www.edg.net.au

PROJECT:
BRACKEN RIDGE TAVERN

154 BARRETT STREET, BRACKEN RIDGE

A	PRELIMINARY	28/02/2025
REV:	DESCRIPTION:	DATE:

DRAWING:
**ELECTRICAL SERVICES
PART B
REFLECTED CEILING PLAN**

SCALE: 1:100 UNO	AT A1	PROJECT NO: C3358a	DRAWING NO: E09	REVISION: A
---------------------	-------	------------------------------	---------------------------	-----------------------